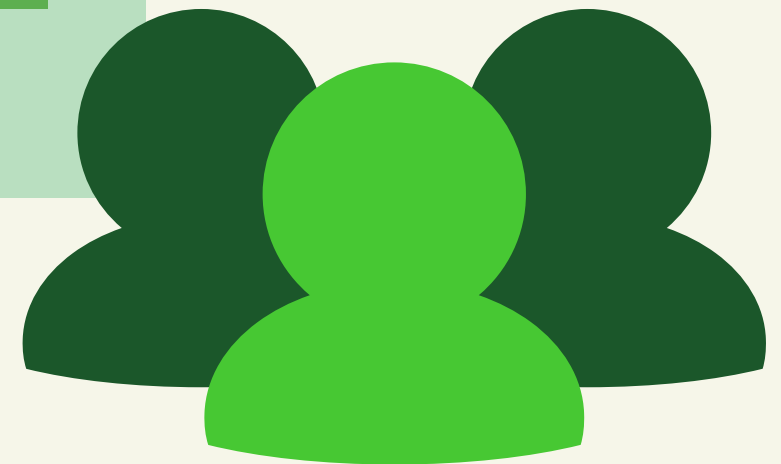


NORTH EAST ENVIRONMENT ACTION ROUNDTABLE (NEEAR)

Bringing NRM communities together for effective partnerships and project opportunities to grow a resilient region. Proven to streamline discussions and form collaboration opportunities.



Authors
Sophie Enders
Project coordinator

Affiliations
Swamps, Rivers & Ranges
Swampsriversranges@gmail.com
Swampriversandranges.org.au

INTRODUCTION

The NEEAR was established as a communication and collaboration tool to provide an opportunity to come together and discuss problems affecting the region or identify upcoming opportunities.

With a diverse region of NRM, environmental groups and other agencies/groups who work directly with North East Victorian landscapes, the great wealth of knowledge available which can be better shared was identified.

It is intended to establish the NEEAR as an ongoing collaboration and communication opportunity for NRM and environment groups within the region.

WHO

Our invitation list started with the NRM groups we typically meet regularly; In this case Landcare, the CMA and local council. We then invited groups or organisations who aren't necessarily already tapped into these communication pathways. For example, in our area, Water authorities and plantation companies and highly relevant to the management of landscapes and yet often are not engaged with the conservation efforts of other groups, particularly at a grass roots level.



12 key groups involved

TOPICS

A typical agenda includes:

- updates from each organisation on key projects or upcoming events,
- opportunities for collaboration, e.g. developing project ideas, or identifying partnerships,
- issues/problems currently occurring in the region (this has included bushfire, flooding, weed infestations),
- presentation of findings and research,
- review of previous topics and actions.

ACTION

LEARNING



DETAIL

The key detail in planning was to bring everyone to the table including “non-traditional” NRM (natural resource management) partners, This allowed the collaborative capacity to be developed, thereby building region-wide resilience through networking, increased communication and knowledge sharing. Each meeting needed to ensure there were take-away actions and value gained through attendance.

BENEFITS

Short and sharp information sharing leading to connections and collaboration. Streamlined the need for smaller meetings with agencies one at a time; these can instead be included as an agenda item to enable contact with a range of agencies/groups. Adding to traditional collaborative partnerships by bringing new agencies to the table and providing new opportunities.

OUTCOMES

- Collaborative and project partnership
- Cuts the time taken to find project partners as attendees are tapped into what is being done, by whom and where synergies exist; e.g. when grants are upcoming ideas are shared and partnerships formed in the one meeting.
- Key issues and topics which affect the region have been raised and acted on in a range of workshops or events. This includes projects and events on climate change, vegetation decline and bushfire.

COLLABORATION



REPLICATION

Some key lessons – everyone has a seat at the table, call for collaboration, invite non-typical partners (they have more ability and interest than you may think), cover multiple levels of interest, keep it short and simple (people are busy). Timing of meetings is important particularly around grant cycles.